

Video



Class of 2022 - 2028

**Information Evening
Tuesday 15th February**

A close-up photograph of a red door. On the left, there is a brass handle. In the center, a brass nameplate is mounted, featuring the words "LORETO COLLEGE" in raised, serif capital letters. The nameplate is highly reflective, showing a distorted reflection of the surrounding environment, including a yellow building and greenery. The door itself has a classic paneled design.

LORETO COLLEGE

Welcome



This evening you will be hearing from:

- Ms Jackie Dempsey - Principal
- Mr Des Fitzgerald - Deputy Principal
- Ms Jane Kelly - SEO
- Ms Jeanne Barrett - Year Head
- Mr Donnchadh O'Mahony - Career Guidance Counsellor
- Mr Dave Fagan - CompuB



Loreto College
St. Stephen's Green
Principal's Welcome

Ms Jackie Dempsey



Education is not the filling of a pail, but the
lighting of a fire.

(William Butler Yeats)

izquotes.com





LORETO COLLEGE



Loreto College

St. Stephen's Green

School Ethos

Mr Des Fitzgerald



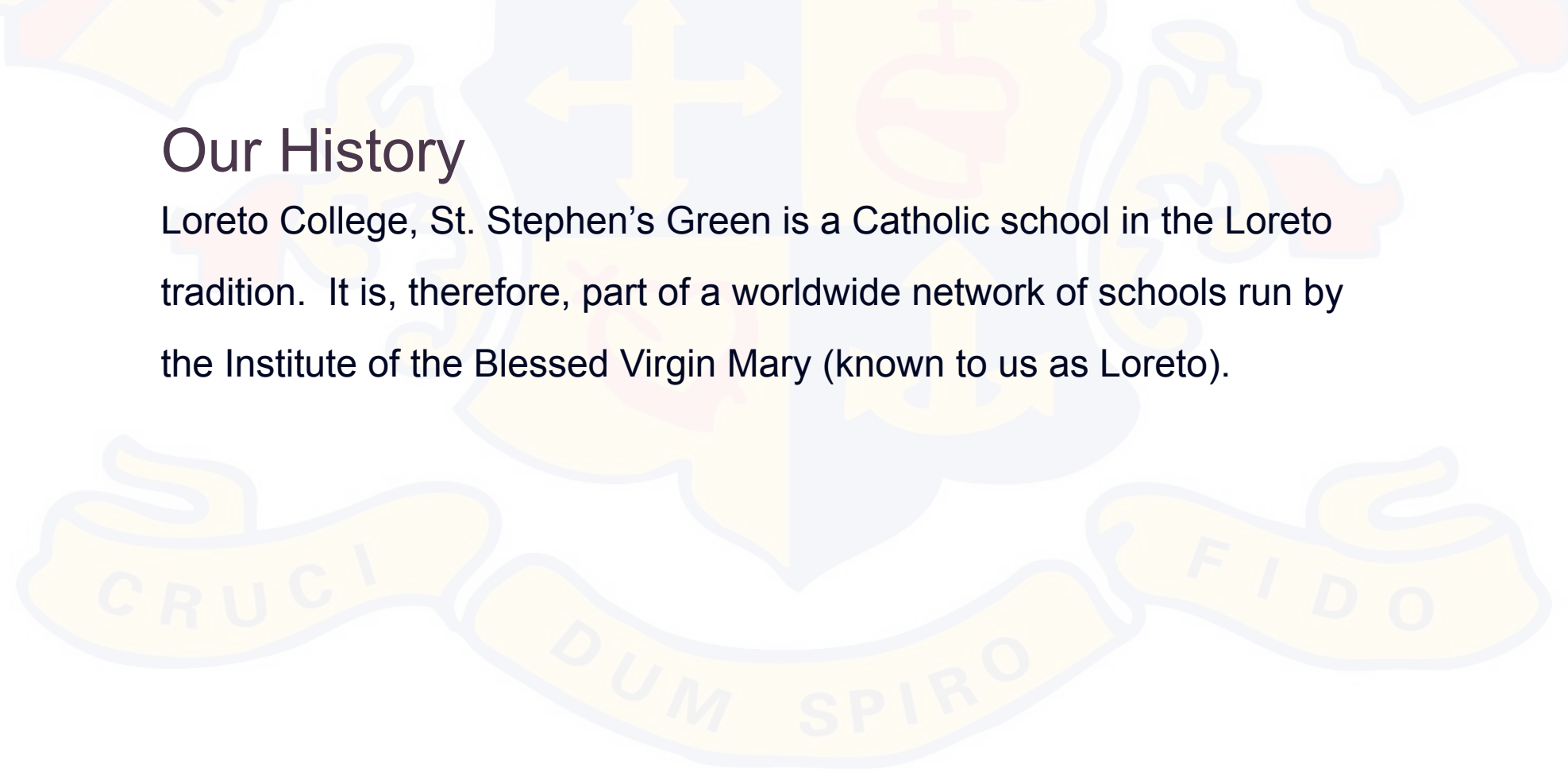
MISSION STATEMENT

“In an atmosphere of mutual respect and justice, we are a community that aims to provide a rich and diverse curriculum catering for the needs of each individual student. We provide a holistic education wherein we strive for excellence in the pursuit of knowledge. Social concerns and spiritual values are central to our educational philosophy, while sporting and cultural endeavours are encouraged. Each student is challenged to realise her full potential and to recognise the dignity of each human being”.



Our History

Loreto College, St. Stephen's Green is a Catholic school in the Loreto tradition. It is, therefore, part of a worldwide network of schools run by the Institute of the Blessed Virgin Mary (known to us as Loreto).





The Loreto College's philosophy of education is:

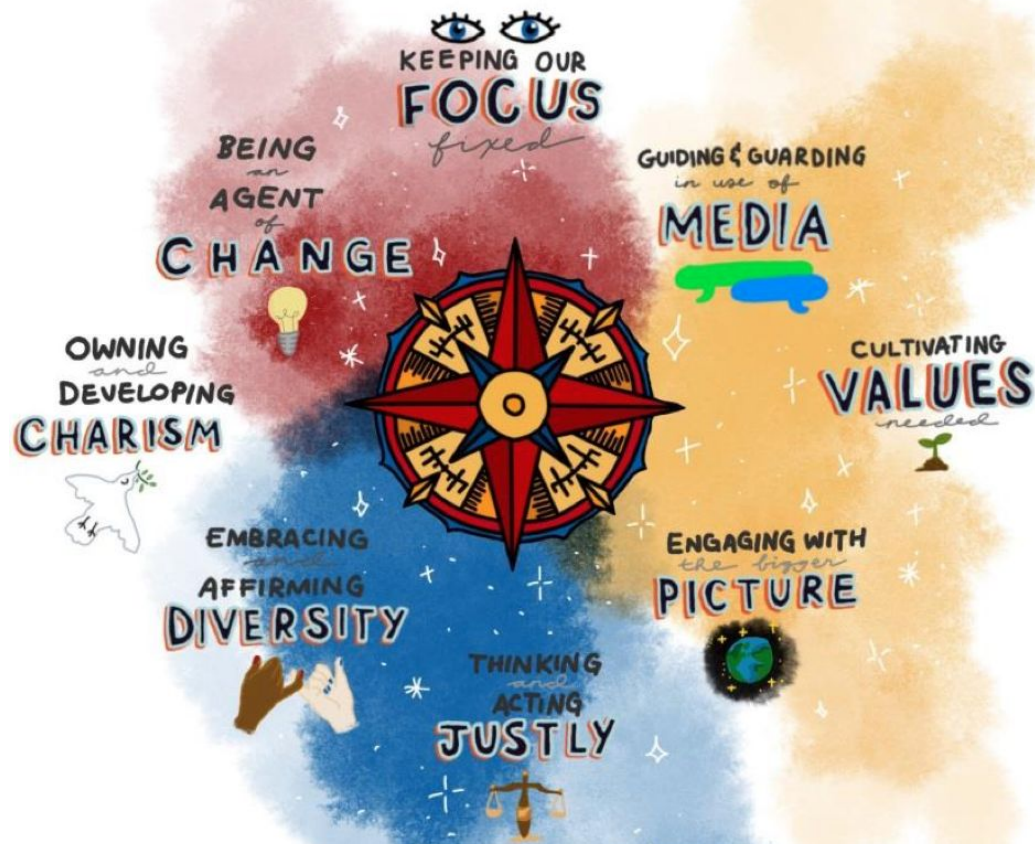
- Centred in God.
- Rooted in Gospel values.
- Derives its objectives and specific expression from the insights and vision of St. Ignatius of Loyola and Mary Ward.

Here in Loreto St Stephen's Green we aim to:

- Position the person and best interests of the student at the **centre** of what we do.
- Nurture **respectful and caring** relationships between teachers and students.
- Provide an appropriate and **proactive learning experience** and environment.
- Set each student on a pathway to **personal excellence**, recognising different aptitudes and gifts.
- Foster in students a generosity of spirit and a readiness to place their **talents** at the **service of others**.
- Collaborate with **parents** in accompanying each **student's progress** towards maturity.
- Respect and **honour diversity**, entering into genuine dialogue with unfamiliar cultures and new developments.
- **Strengthen links** between the world-wide network of Loreto schools and students.



ROOTED RESPONSIVE RELEVANT



ARIA REGINA ANGELORUM

- PERSONAL DEVELOPMENT THROUGH THE LORETO CORE VALUES -

JUSTICE

Responsible
Right Relations
Equal Opportunities
Inclusive
Challenging
Nurturing
Honest
Respectful

FREEDOM

Open
Broad Horizons
Affirming
Independent
High Expectations
Courageous
Commitment
Confident

TRUTH

Courteous
Upright
Loyal
Spiritual
Questioning
Reflective
Reliable
Safe

SINCERITY

Authentic
Encouraging
Trustworthy
Empathetic
Honour Confidence
Thoughtful
Kind
Generous

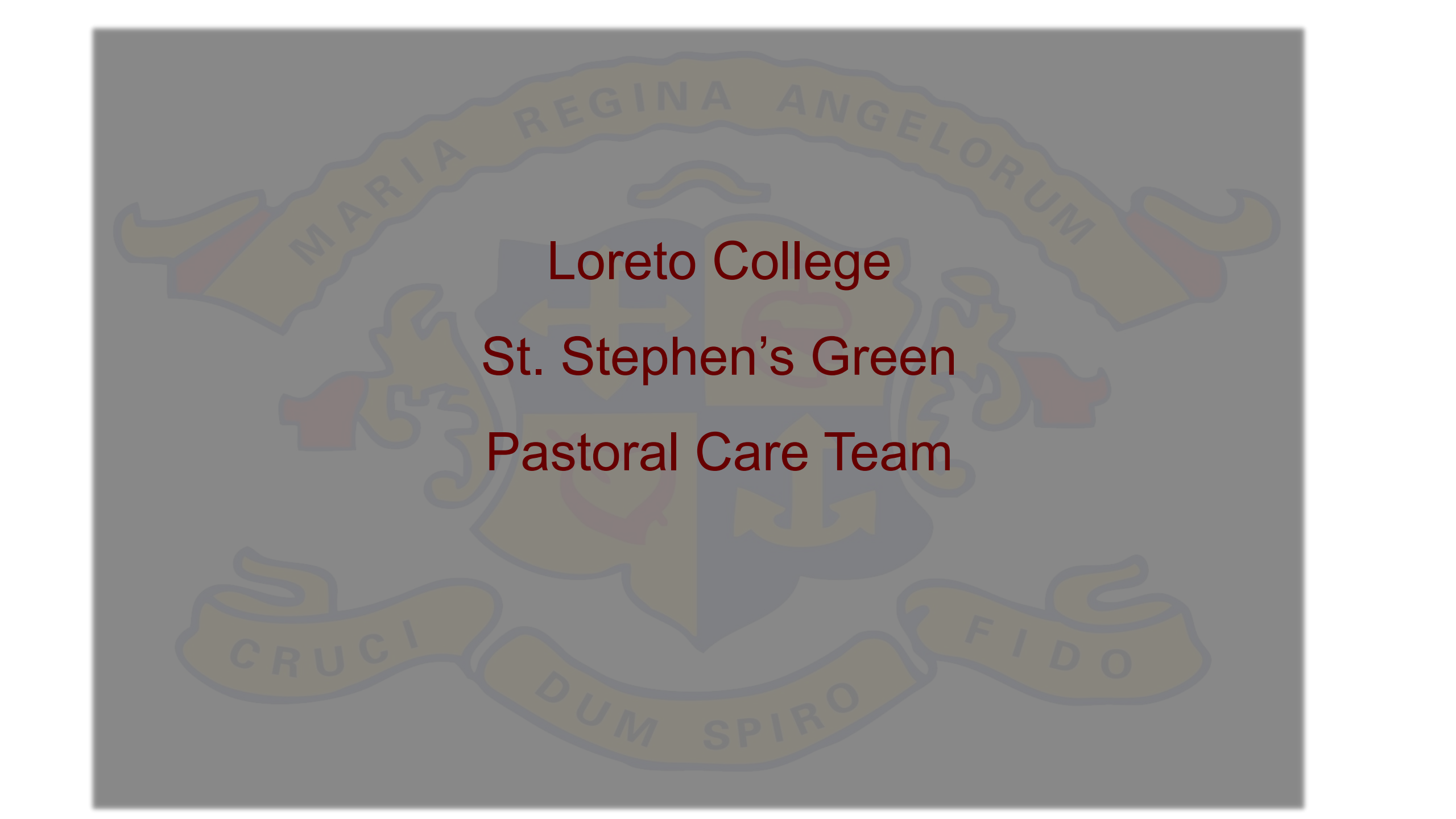
JOY

Welcoming
Belonging
Enthusiastic
Fun
Gracious
Celebration
Participation
Friendship

CRUCI

DUM SPIRO

FIDO



Loreto College
St. Stephen's Green
Pastoral Care Team



Ms Dempsey
Principal
(SMT)



Mr Fitzgerald
Deputy Principal
(SMT)



Ms Kelly
Student
Enrichment
Officer (SEO)
(SMT)



Ms Barrett
Year Head

Pastoral Care Team 2022



Mr O'Mahony
Guidance Counsellor



Ms Freeman
SEN Co-ordinator



Ms Curtis
Chaplain

Tutors

Caomhnóir

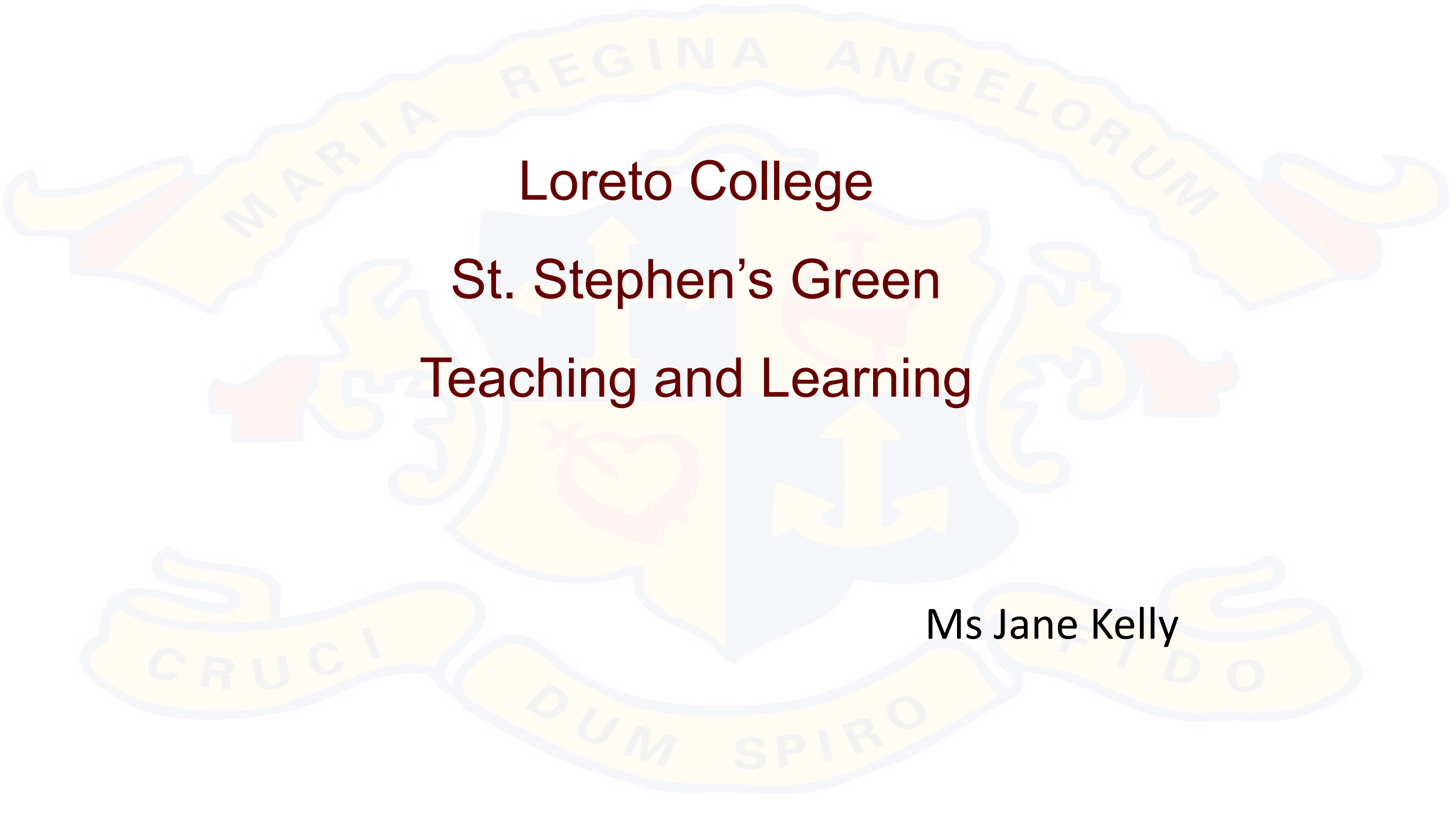
Teachers

Sports Dept.

6th Year Committee

Student Leadership Team





Loreto College
St. Stephen's Green
Teaching and Learning

Ms Jane Kelly



School Day - Classes one hour duration

	Monday - 6	Tuesday - 6	Wednesday - 4	Thursday - 6	Friday - 6
8:45am Start	Classes	Classes	Classes	Classes	Classes
10:45am	Break	Break	Break	Break	Break
10:55am	Classes	Classes	Classes	Classes	Classes
12:55pm	Lunch	Lunch	Finish	Lunch	Lunch
1:45pm	Classes	Classes		Classes	Classes
3:45pm Finish	Finish	Finish		Finish	Finish

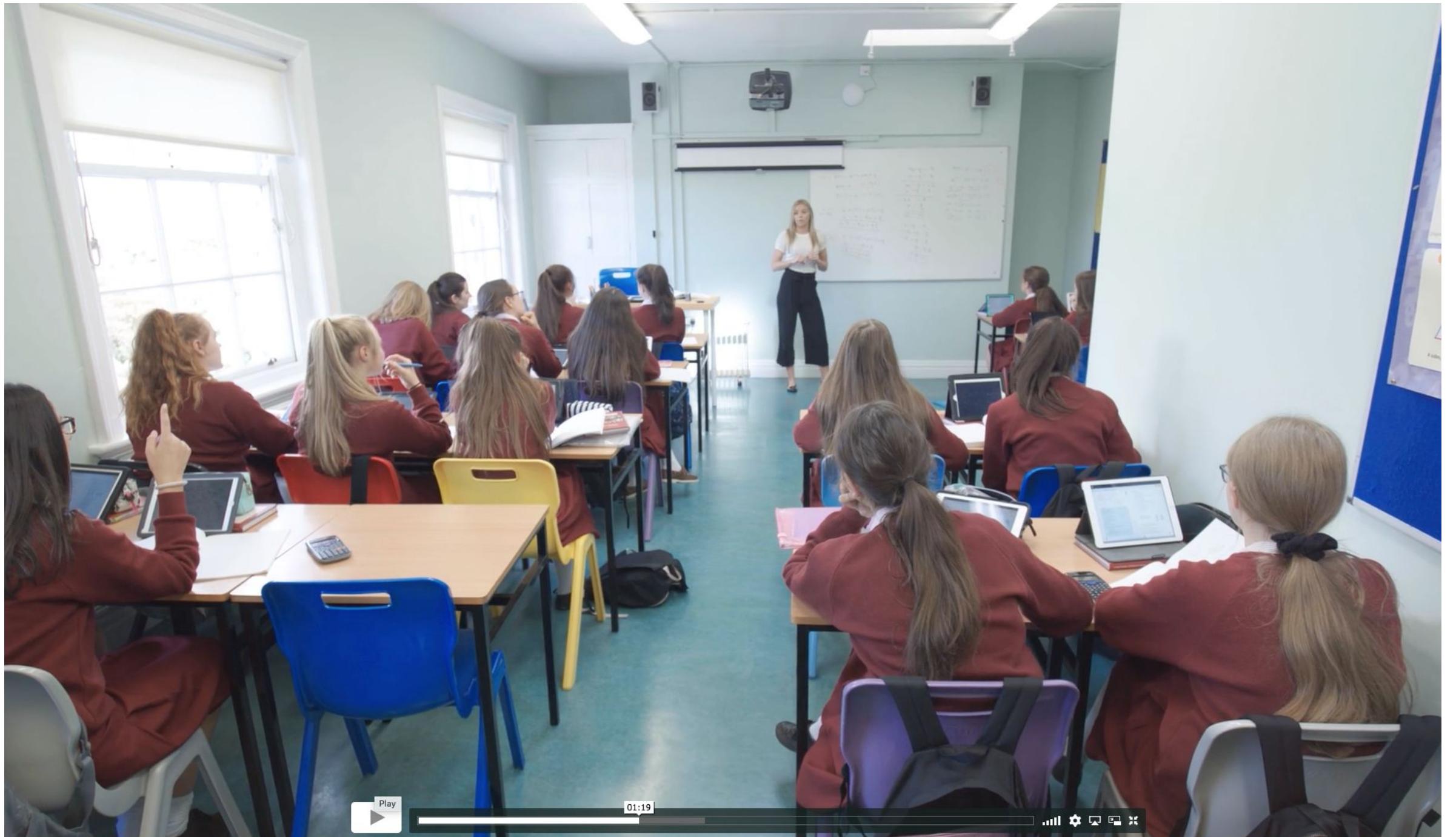
Tutor time two mornings a week and Assembly once a week at 8:30am - days may vary depending on Year Group











Courses and Levels:

- Mixed ability classes.
- Common level in 1st year with Ordinary level classes available in Maths from 2nd year and Irish from 3rd year as required.
- Targeted approach with regard to learning support interventions - evidence based programme. The SEN Team is guided by the NCSE Continuum of Support.
- Courses and options will be covered by our Guidance Counsellor Mr O'Mahony

Learning Support

- Student Support Team led by Ms. Ann Freeman
- Work closely with Guidance Counsellor and SMT
- Continuum of Support - Support for All, Support for Some, Support for Few
- Small classes or one to one or in class support through the use of co-teaching
- More than 10% of students are in receipt of Learning Support
- Please contact the school if you have concerns about your daughter



Learning Support

- Educational Psychological Reports - email to info@loretothegreen.ie
- Meetings via zoom will be arranged by the Student Support Coordinator

ACTIVE



RESPONSIBLE



CONNECTED



RESILIENT



RESPECTED

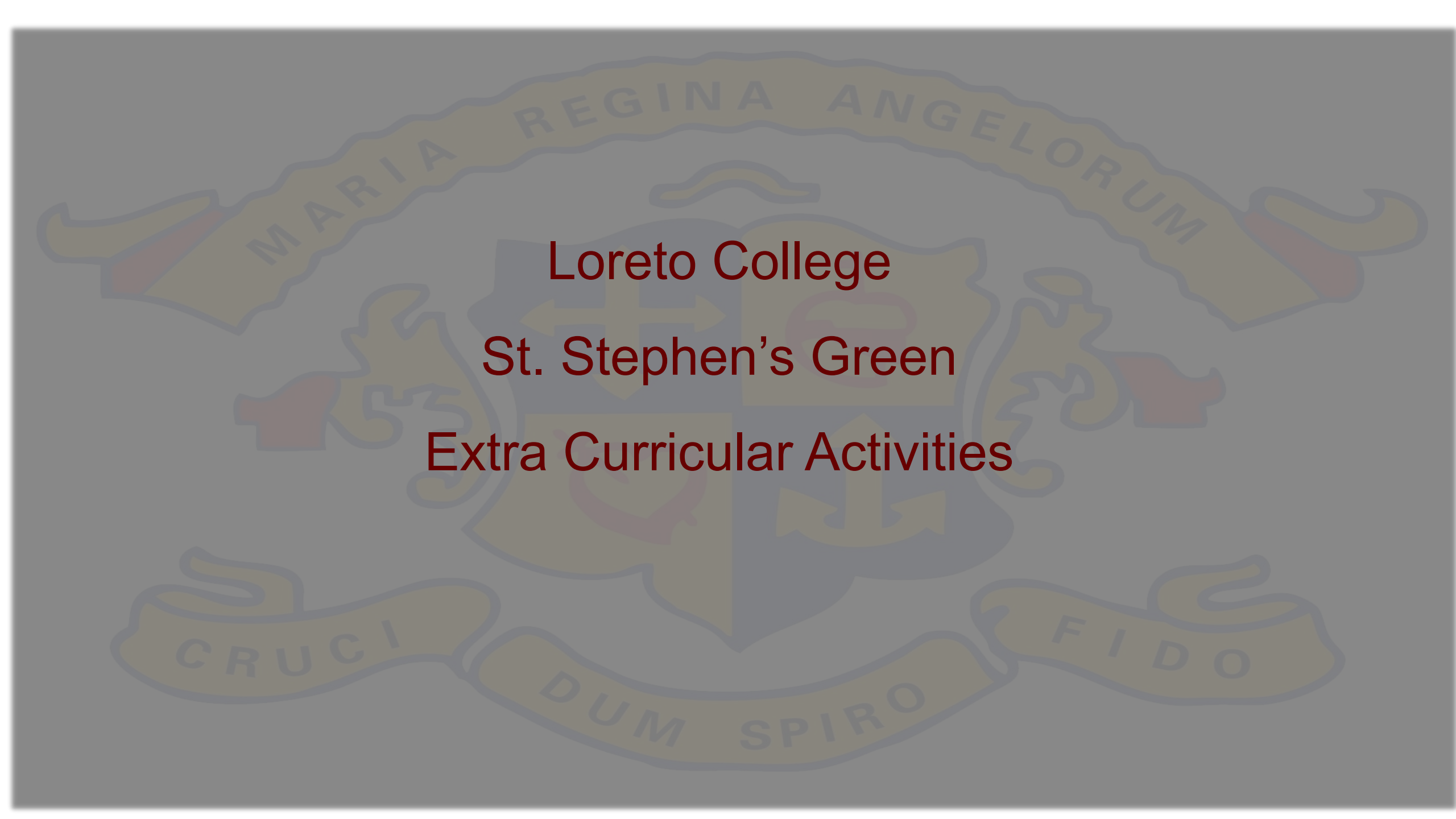


AWARE



Wellbeing

- **SPHE** - Social Personal and Health Education
- **RSE** - Relationship and Sexuality Education
- **PE**
- **CSPE** - Civic, Social and Political Education
- Computers, Choir and Games
- Subject specific wellbeing



Loreto College
St. Stephen's Green
Extra Curricular Activities

Loreto Sports

Meagan Hoffman (Sports Coordinator)- organises & looks after all the extra curricular sports in the school

Sports offered in Loreto:

- Hockey, Basketball, Gaelic, Camogie, Cross Country, Athletics, Tennis, Cricket, Gymnastics, Swimming, Lacrosse, Tag-Rugby, Soccer, Badminton, Table Tennis (*Sailing, Equestrian, Golf)



Extra curricular activities





CAMOGIE

SWIMMING

FOLK GROUP

DEBATING

CEILIUR

DRAMA CLUB

CAROLS BY CANDLELIGHT

BASKETBALL

MISSION POSSIBLE

TALENT SHOW

ANTI-BULLYING WEEK

ORCHESTRA

MATHS CLUB

GAELIC

WELLBEING WEEK

GREEN COMMITTEE

CODING CLUB

RETREATS

SCIENCE CLUB

ENTERPRISE CLUB

LUNCHTIME SPORTS

HOCKEY

CRAFT CLUB

MAYTIME MUSIC

ATHLETICS

SOMETHING FOR EVERYONE

Some Useful Resources to help the transition from Primary to Post Primary:



Loreto College
St. Stephen's Green



gov.ie

Back to School

Communication



- School App
- News and notifications
- Record absences on the app
- Communication tool between home and school

VShare

School Operating System - [Login](#)

Parent App [Parent App - Everything you need to know](#)

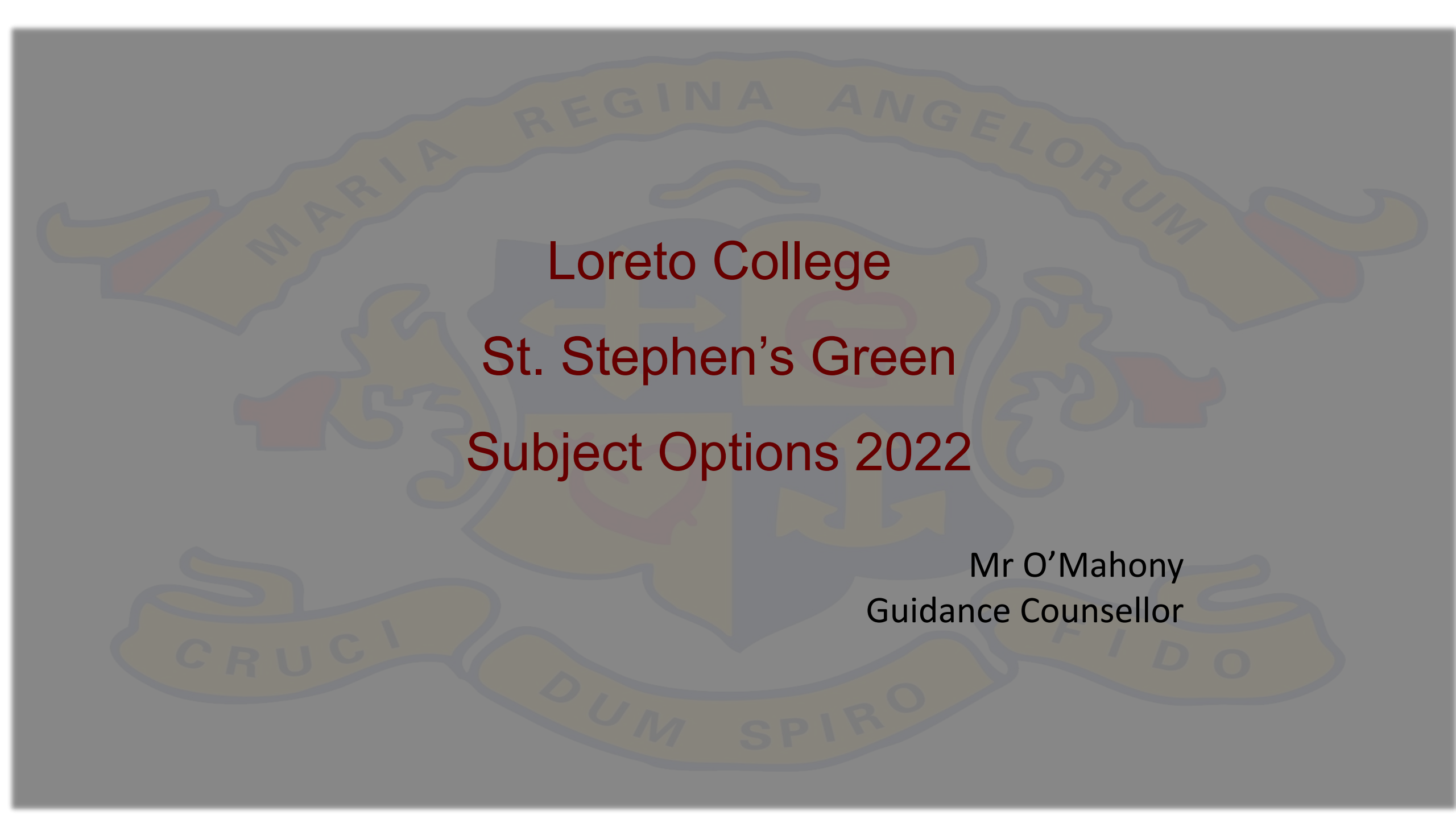
<https://vshare.wistia.com/medias/n7yo7lck0k>- Desktop

<https://vshare.wistia.com/medias/nr3tejf165>-- Android/Apple

Options for 1st Year


Guide to inputting subject options

<https://vsware.wistia.com/medias/n7yo7lck0k>



Loreto College
St. Stephen's Green
Subject Options 2022


Mr O'Mahony
Guidance Counsellor



Loreto College
St. Stephen's Green
iPad Training

CompuB

Miscellaneous items:

- Uniform suppliers - 
- Reminder - School App & Vsware
- Invitation to visit the school, complete the CATs on Saturday May 7th, time to be confirmed.

Resources and Contacts



info@loretothegreen.ie

www.loretothegreen.ie

[Step Up to Secondary School](#)

[Gov.ie Back to School](#)

A close-up photograph of a red door. On the left, there is a brass handle. In the center, a polished metal plate is mounted on the door, featuring the words "LORETO COLLEGE" in a raised, serif font. The plate is highly reflective, showing a clear reflection of a yellow building and greenery. The door itself has a classic paneled design.

LORETO COLLEGE

Thank you